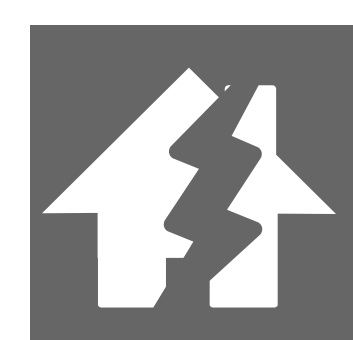
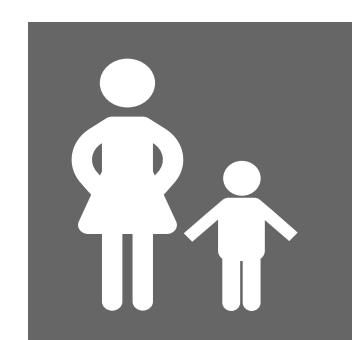




Tsunami



Earthquake

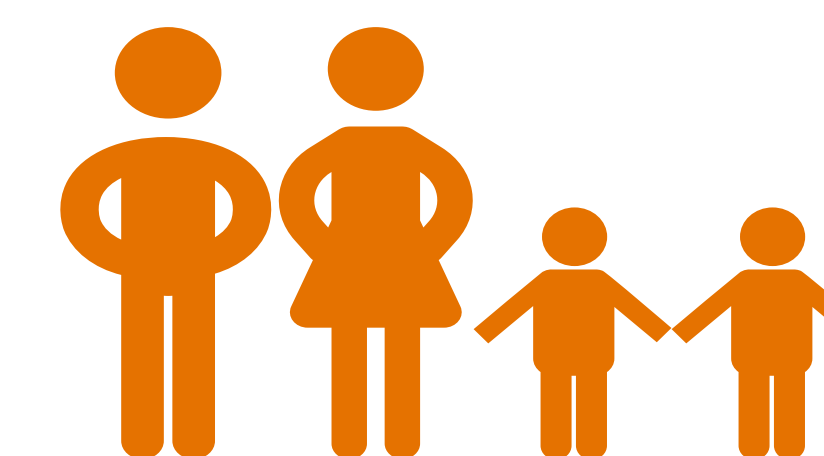


48,000 displaced



Extensive damage to homes and infrastructure

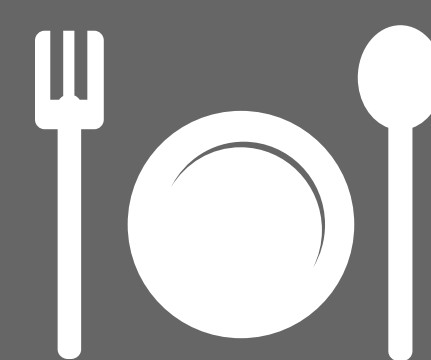
The context



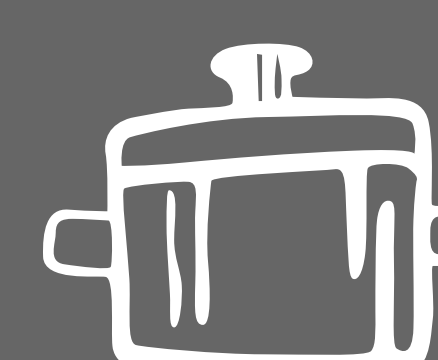
1.5 million

- A 7.5 magnitude earthquake occurred just off the island of Sulawesi, Indonesia, on Friday 28 September. Multiple earthquakes and aftershocks followed, triggering a tsunami which struck areas including Palu, the provincial capital, causing widespread death and devastation.
- Up to 1.5 million people are affected, with more than 1,200 people killed and around 48,000 people reported to be displaced from their homes.
- The needs are acute, and access to the worst affected areas is limited due to damage to infrastructure.

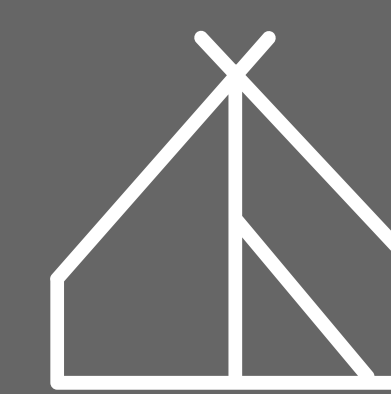
Our response



Food



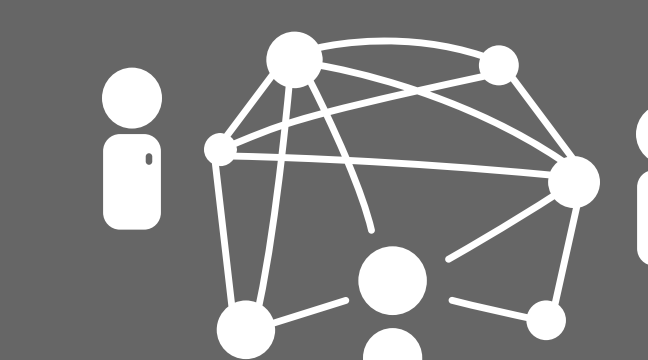
NFIs



Shelter



Water



Co-ordination

2
October
2018

Integral Disaster Response launched



17 Integral Members are working together to respond to this disaster