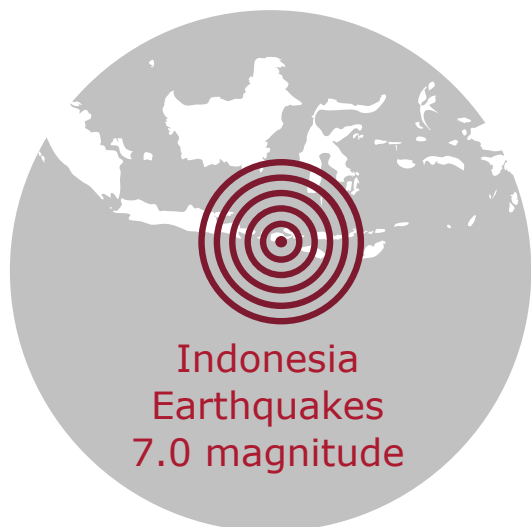


The context



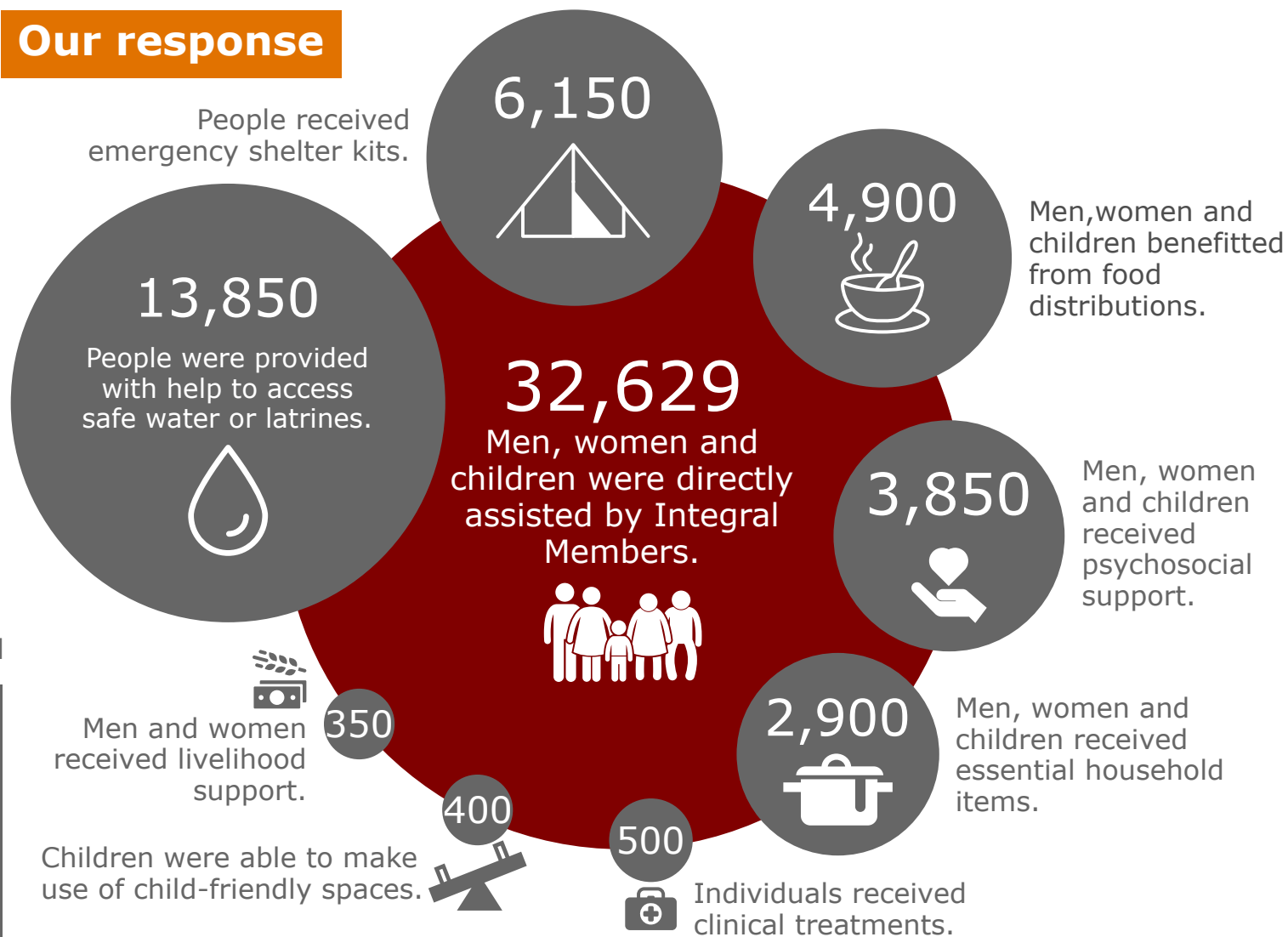
80,500 houses damaged



390,000 people displaced

A number of earthquakes hit the island of Lombok in Indonesia. The strongest struck on 5 August and measured 7.0 magnitude. These earthquakes and the aftershocks that followed caused widespread damage to homes and public infrastructure.

Our response



13 Aug 2018

Integral Disaster Response launched



10 Integral Members are supporting local partners to respond to this disaster