

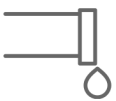
The context

A 7.8-magnitude earthquake struck coastal areas of northwest Ecuador on 16 April 2016.

Over 380,000 people were left in need of emergency assistance.



Families were left in need of food when crops and livelihoods were destroyed.



Water supplies were badly damaged in the earthquake.

Our response

63,000



Men, women and children were directly assisted by Integral Members.

20,000

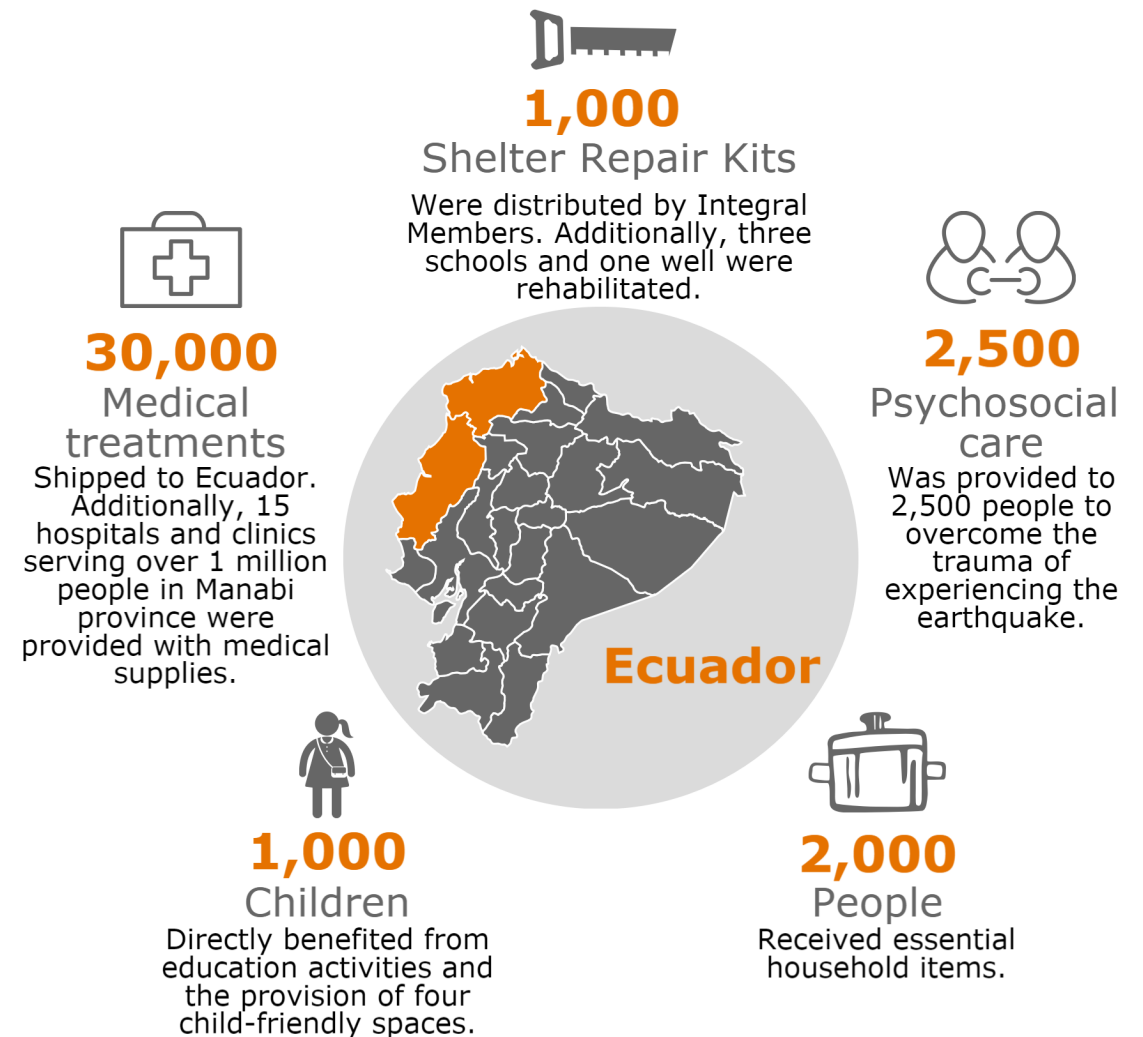


People benefited from food distributions.

11,000



People received water filters, buckets and jerry cans to improve access to safe drinking water.



Integral Disaster Response launched



Nine Integral Members worked together to respond to this disaster