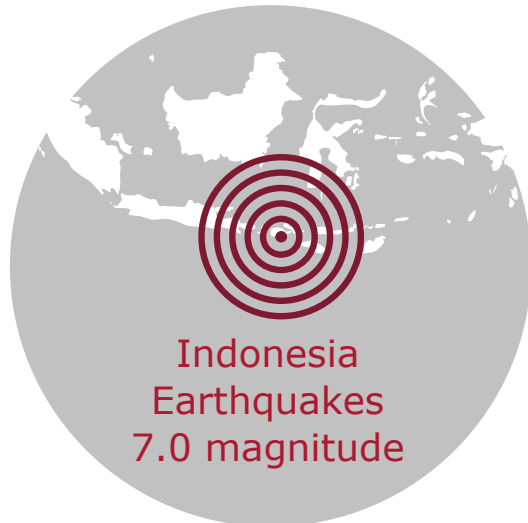


### The context



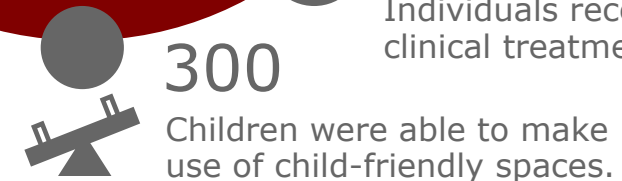
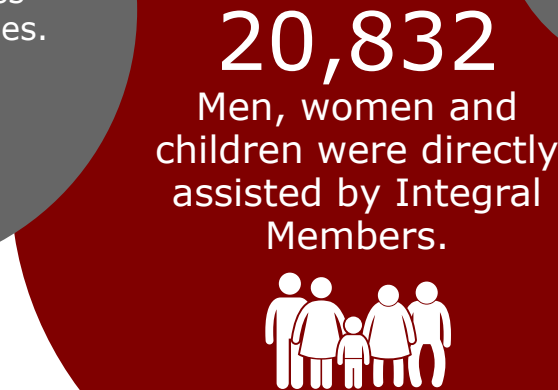
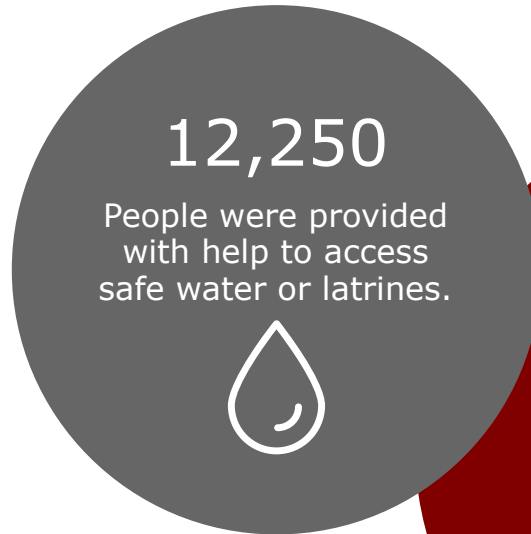
80,500 houses damaged



390,000 people displaced

A number of earthquakes hit the island of Lombok in Indonesia. The strongest struck on 5 August and measured 7.0 magnitude. These earthquakes and the aftershocks that followed caused widespread damage to homes and public infrastructure.

### Our response



Integral Disaster Response launched



10 Integral Members are supporting local partners to respond to this disaster